

FIBER ACCESSORIES

FIBER SPLICER TRAY SLIM VERSION

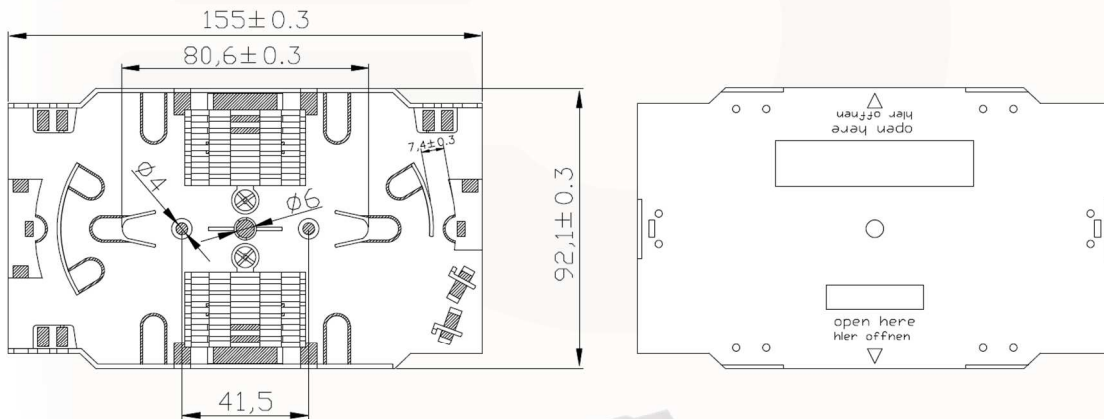


Description

ORCA® series fiber Splice Tray is able to hold up 12/24 subscribers. It is used as a termination point for the fiber to connect with fiber in Cabling or FTTH indoor application. It integrates fiber splicing, termination, storage connection in one solid protection box.

Feature:

- | | |
|---|-----------------------|
| Realized in ABS, gray color | Dimension: 156x93x7mm |
| Suitable for the fusion splice | 12/24 fiber splicers |
| Integrated with splice cassette and cable management rods | |
| Manage fibers in a reasonable fiber radius condition | |
| Easy to maintain and extend the capacity | |
| Embedded type surface, easy for installation and removal | |
| Change the core number according to changing the disc | |



Ordering Information code:

OC-FPP-170600-00 ORCA - Fiber optic slim splicer tray 12/24 FO - gray

Specifications subject to change without prior notice - For more details please visit www.orca.it